

REVISION HISTORY				
ECO	REV	DESCRIPTION	DATE	APPROVED
	A1	INITIAL RELEASE	6-19-07	
	A2	SILKSCN & 50 OHM LINE WIDTH	7-09-07	

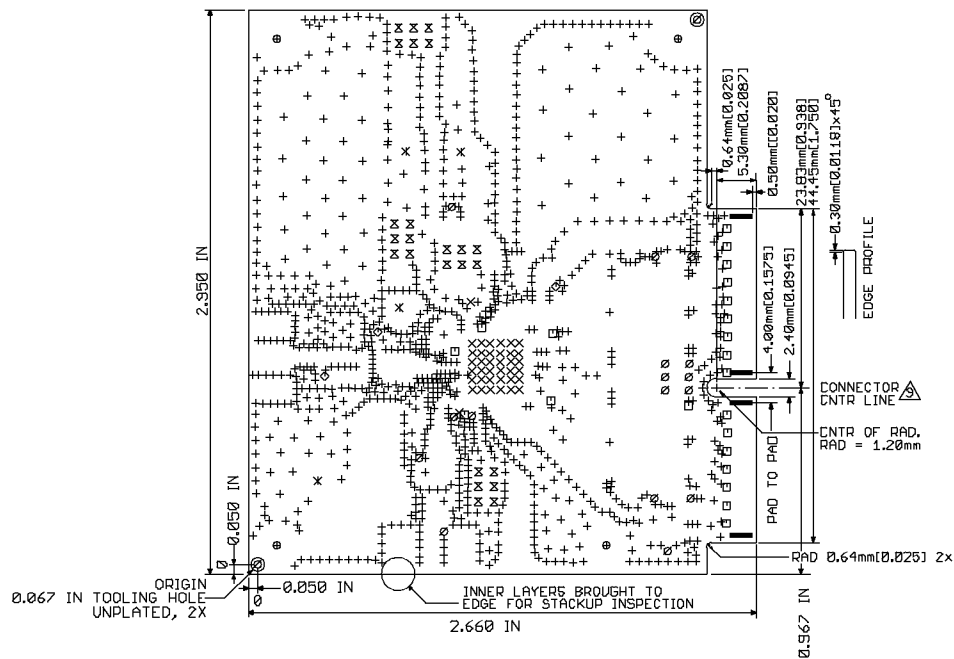


Diagram illustrating the cross-section of a 6-layer PCB stackup. The layers are labeled as follows:

- 0.0063" (Prepreg)
- 0.0140" (Core)
- 0.0011" (Prepreg)
- 0.0140" (Core)
- 0.0063" (Prepreg)

The total thickness is 0.0422". The layer assignments are:

- L1-TOP = 1/2 OZ Cu
- L2 = 1 OZ Cu
- L3 = 1 OZ Cu
- L4 = 1 OZ Cu
- L5 = 1 OZ Cu
- L6-BACK = 1/2 OZ Cu

NOTES: UNLESS OTHERWISE SPECIFIED.

1. PARTWORK P/N DC1282A REV Z  
2. FAB PER IPC-A-600  
3. MATERIAL: EPOXY FIBERGLASS, NEMA GRADE FR-4 COLOR NATURAL  
FINISHED THICKNESS PER FIGURE A,  
COPPER THICKNESS PER FIGURE A,  
FLAMMABILITY RATING: 94 V-2 MINIMUM.  
4. SIZE: PANELIZE WITH TABS TO DIMENSIONS AND TOLERANCES SHOWN.  
NO TABS PERMITTED ON EDGE CONNECTOR  
MAX PANEL DIMENSION 12 INCHES  
Ø ARE PRIMARY DATUMS.  
5. BOARD: SELECTIVE PLATED BOARD, SOLDER  
MASK OVER BARE COPPER (NI/AU UNDER MASK OK),  
300uIn Au OVER 100uIn LOW STRESS Ni ON EDGE FINGERS,  
3-5uIn Au FLASH OR IMMERSION Au MIN.  
OVER 100uIn LS NI ELSEWHERE.  
SOLDER MASK TYPE: WET PHOTO-IMAGEABLE.  
SOLDER MASK COLOR: BLACK - FOR THERMAL RADIATION.  
SILKSREEN COMPONENT SIDE(S) WITH WHITE NON-  
CONDUCTIVE EPOXY INK.  
PLATE THRU ALL HOLES WITH COPPER  
MINIMUM PLATING THICKNESS OF 1 OZ.  
EXCEPT WHERE PLATING IS NOT REQUIRED.  
6. DRILL: ALL HOLES SHALL BE DRILLED +/- .003 INCH  
WITH RESPECT TO CENTER OF DRILLER.  
ALL HOLES FINISHED SIZE AFTER PLATING  
7. DROP ALL UNUSED PADS ON INNER LAYERS.  
8. DO NOT ALLOW REWORKS TO BE DONE ON THE BOARD. BE  
ROUTED AFTER FOR PROPER CONNECTION ALIGNMENT

DRILL LEGEND				
SYM	SIZE	QTY	TOLERANCE	PLTD
+	.010	1058	+0/- .010	YES
x	.012	38	+0/- .012	YES
z	.016	22	+/- .003	YES
□	.020	16	+/- .003	YES
o	.024	3	+/- .003	YES
■	.032	24	+/- .003	YES
+	.066	4	+/- .003	YES
+	.067	2	+0.04-0	NO
x	.188	4	+/- .003	YES

UNLESS OTHERWISE SPECIFIED  
DIMENSIONS ARE IN INCHES  
TOLERANCE ON ANGLE ---  
2 PLACES 0.01 3 PLACES 0.005  
INTERPRET DIM AND TOL  
PER ASME Y14.4M-1994

CONTRACT NO.
--------------

APPROVALS		DATE
DRAWN	E.TRELEWICZ	
CHECKED		
APPROVED		
ENGINEER	D.REDMAYNE	
DESIGNER	D.REDMAYNE	

DO NOT SCALE DRAWING

7/09/2007 04:33:20p



**LINEAR**  
TECHNOLOGY

1630 McCarthy Blvd.  
Milpitas, CA 95035  
Phone: (408) 432-1900  
Fax: (408) 434-0507

TITLE:

LTC2209CUP-LVDS

SIZE	CAGE CODE	DWGNO
1		

DC1282A

REV:	2
------	---

SCALE:NONE	FILENAME: DC1282A2
------------	--------------------

SHEET 10 OF 1